

CompressedAirDucation.com

Service Inspection Checklist

Professional Inspection

The following inspections and actions should be performed in conjunction with a compressed air service professional service technician.

Operating Data Log

- Recent data logs and maintenance history reviewed with end user

Gearcase

- Impellers, inlets, and diffusers cleaned and inspected
- Gearing visually checked
- Gearing backlash clearances measured
- Axial pinion floats measured
- Clearances between impellers and inlets checked

Intercoolers and Aftercooler

- Bundle tubes inspected, cleaned (if required)
- Bundle fins inspected, cleaned (if required)
- Cooler cavities cleaned and inspected
- Condensate removal system cleaned and inspected
- Cooling system sensors checked

Lubrication System

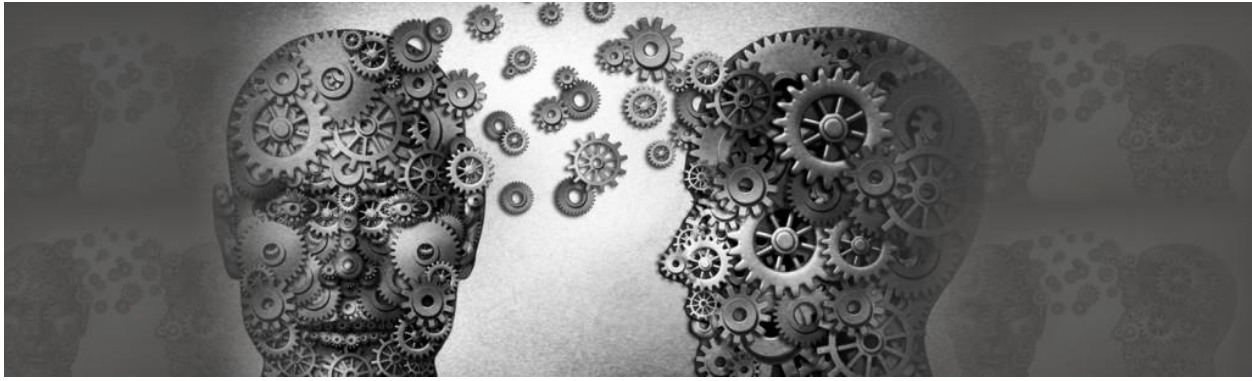
- Piping connections checked for leaks
- Oil visually inspected
- Oil pumps and oil cooler inspected
- Oil system sensors checked

Filters

- All filter elements inspected and replaces as required

Control Panel

- Inspected for proper configuration and operations (adjust as required)



CompressedAirDucation.com

Control Valves

- Inlet guide vane or inlet valve inspected and adjusted
- Compressor Blow off or bypass valve inspected and adjusted
- Discharge air check valve inspected
- Control system sensors checked

Drive Motor

- Main drive coupling inspected and greased (if applicable)
- Motor inspected in accordance with manufacturer's instructions